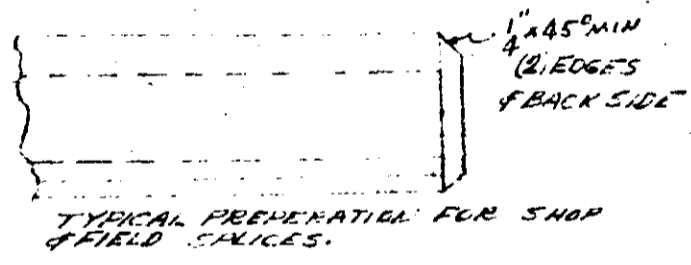


JOINTS #2 THRU #6 (16) P.C.S. REQ. B². PHASE (1) JOINTS #2 THRU #6 (10) P.C.S. REQ. B². PHASE (2)
 JOINTS #2 THRU #6 (10) P.C.S. REQ. B¹. PHASE (1) JOINTS #2 THRU #6 (10) P.C.S. REQ. B¹. PHASE (2)

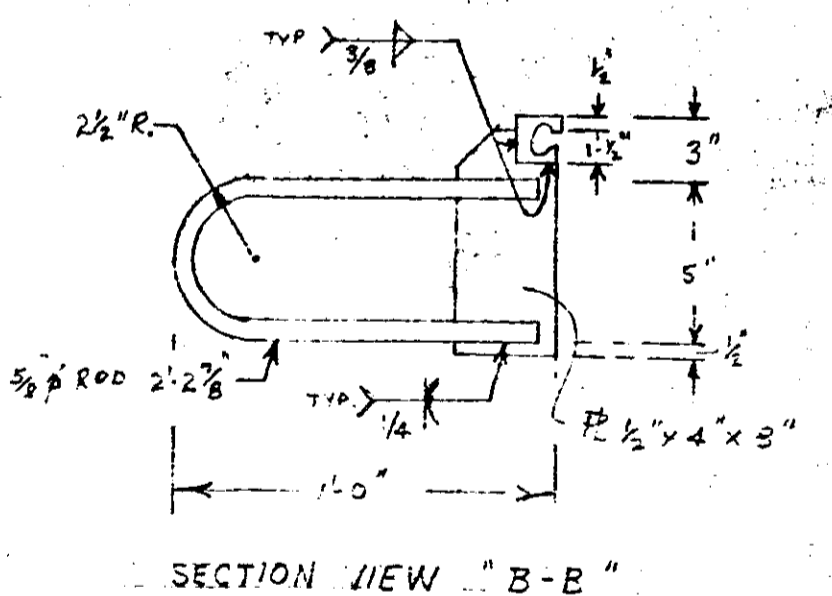
PLATE SIZE	NO. PER	LOCATION	DIM. X"	DIM. Y"	PLATE	SIDE WALL	MEDIAN
3" x 2 1/2" x 1'-10"	4 P.C.	JOINT #1 N.B. & S.B.	2'-3"	12"	A1	2	2
1" x 1 1/2" x 1'-9"	20 P.C.	JOINTS #2, 3, 4, 5 & 6 N.B. & S.B.	1'-8"	11"	B1	10	10
1" x 2 1/2" x 3'-2"	3 P.C.	JOINT #7 S.B. N.B.	2'-3"	2'-4"	C1	2	1
1" x 2 1/2" x 1'-10"	1 P.C.	JOINT #7 S.B. N.B.	2'-3"	12"	D1	1	1
1" x 2 1/2" x 1'-10"	4 P.C.	JOINT #8 RAMP #2, N.B. & S.B.	2'-3"	12"	E1	2	2
1" x 2 1/2" x 1'-10"	2 P.C.	JOINT #8 S.B. N.B.	2'-3"	12"	F1	1	1

SUPPLY (102) 3/4" x 4 1/2" BENT BOLTS GALV. SEE SHEET #1 FOR DETAIL.
 (102) 3/4" x 1 1/2" FLAT HD. SLOTTED, GALV. SCREWS.

JOINT #	SO. BOUND	NO. REQ.	PHASE	PHASE	A	B	C	D	E	F
JOINT #8	SO. BOUND	(1) N ¹ & (1) N ² REQ.	1	2	14'-9 1/2"	14'-9 1/2"	14'-9 1/2"	14'-9 1/2"	14'-9 1/2"	14'-9 1/2"
JOINT #7	SO. BOUND	(2) A ¹ & (2) A ² REQ.	1	2	15'-0 1/2"	15'-0 1/2"	15'-0 1/2"	15'-0 1/2"	15'-0 1/2"	15'-0 1/2"
JOINT #6	NO. BOUND	(2) A ¹ & (2) A ² REQ.	1	2	15'-0 1/2"	15'-0 1/2"	15'-0 1/2"	15'-0 1/2"	15'-0 1/2"	15'-0 1/2"
JOINT #5	SO. BOUND	(2) C ¹ & (2) C ² REQ.	1	2	15'-0 1/2"	15'-0 1/2"	15'-0 1/2"	15'-0 1/2"	15'-0 1/2"	15'-0 1/2"
JOINT #4	NO. BOUND	(1) E ¹ & (1) E ² REQ.	1	2	15'-0 1/2"	15'-0 1/2"	15'-0 1/2"	15'-0 1/2"	15'-0 1/2"	15'-0 1/2"
JOINT #3	SO. BOUND	(2) D ¹ & (2) D ² REQ.	1	2	16'-0 1/2"	16'-0 1/2"	16'-0 1/2"	16'-0 1/2"	16'-0 1/2"	16'-0 1/2"
JOINT #2	NO. BOUND	(2) F ¹ & (2) F ² REQ.	1	2	17'-0 1/2"	17'-0 1/2"	17'-0 1/2"	17'-0 1/2"	17'-0 1/2"	17'-0 1/2"



GENERAL - NOTES
 ALL COMPONENTS COMPRISING THE EXPANSION DEVICE SHALL BE IN ACCORDANCE WITH ACME STRIP SEAL TYPE AS 300A AS MANUFACTURED BY ACME HIGHWAY PRODUCTS, INC. MATERIAL AND WORKMANSHIP SHALL BE IN ACCORDANCE WITH MHD SPECS. DATED 1-1-72 AS AMENDED BY SUPPLEMENTAL SPECIFICATIONS DATED 4-1-76 AND SPECIAL PROVISIONS. STEEL EXPANSION PLATES AND BASE PER MHD 3302. GALVANIZE ALL PLATES, EXPANSION AND BASE PER MHD 3304. CAP SCREWS, NUTS AND BOLTS PER MHD 3302. SHOP INSPECTION BY MHD BEFORE AND AFTER GALVANIZING. NEOPRENE SEAL SHALL BE A CONTINUOUS LENGTH.



STATE PROJECT NO. 2783-9340 (T.H. 35W)
 FEDERAL PROJECT NO. I-26-IR 35W-3 (182)10
 BRIDGE NO. 9340 & 9340A
 HENNEPIN COUNTY, MINNESOTA

CONTRACTOR: DENTON CONSTRUCTION COMPANY
 ALL MATERIAL GALVANIZED
 SEE SHEET #1 FOR GENERAL

COMMERCIAL FABRICATORS INC.		7301 50-76TH AVE. BRIDGEVIEW IL 60157	
SCALE: VARIOUS	APPROVED BY:	DRAWN BY: J.L.P.	REVIEWED:
DATE: 6-1-77	EXP. DEVICES FOR BRIDGES #9340 & 9340A	DRAWING NUMBER: 101A	
SHEET #2 OF 2 JOB # 866			

ADDITIONAL MATERIALS	
SIDEWALK & CURB PLATES	17 PC.
MEDIAN & CURB PLATES	17 PC.
3/4" x 1" FLAT SLOTTED HEAD SCREWS	102 PC.
3/4" x 4 1/2" BENT BOLTS	102 PC.
3/4" x 2 1/2" HEX NUTS	102 PC.
NEOPRENE STRIP SEAL AS 300	53'-0" LG.
NEOPRENE STRIP SEAL AS 300	76'-5" LG.
NEOPRENE STRIP SEAL AS 300	86'-3" LG.
NEOPRENE STRIP SEAL AS 300	71'-3" LG.
NEOPRENE STRIP SEAL AS 300	23'-0" LG.
NEOPRENE STRIP SEAL AS 300	48'-8" LG.

MATERIALS REQUIRED - THIS SHEET	
(4) SECT. A ¹	JOINT #1
(4) SECT. A ²	JOINT #1
(20) SECT. B ¹	JOINT #2 THRU #6
(20) SECT. B ²	JOINT #2 THRU #6
(2) SECT. C ¹	JOINT #7
(2) SECT. C ²	JOINT #7
(1) EA SECT. E ¹ E ²	JOINT #7
(2) SECT. K	JOINT #7
(1) EA SECT. I ¹ I ²	JOINT #7
(1) EA SECT. K ¹ K ²	JOINT #8
(2) SECT. M	JOINT #8
(2) SECT. P	JOINT #8
(1) EA SECT. I ¹ I ²	JOINT #8
(2) SECT. F ¹	JOINT #8
(2) SECT. F ²	JOINT #8
(2) SECT. G ¹	RAMP #2
(2) SECT. G ²	RAMP #2

STATE OF MINNESOTA
 DEPT. OF TRANSPORTATION
 Details and materials appear to be satisfactory for the purpose for which they are intended.
 JUN 17 1977

M. H. D. FILE